



GAT MONTHLY MEMBERSHIP PROGRESS REPORT

Results as of: 5/31/2022

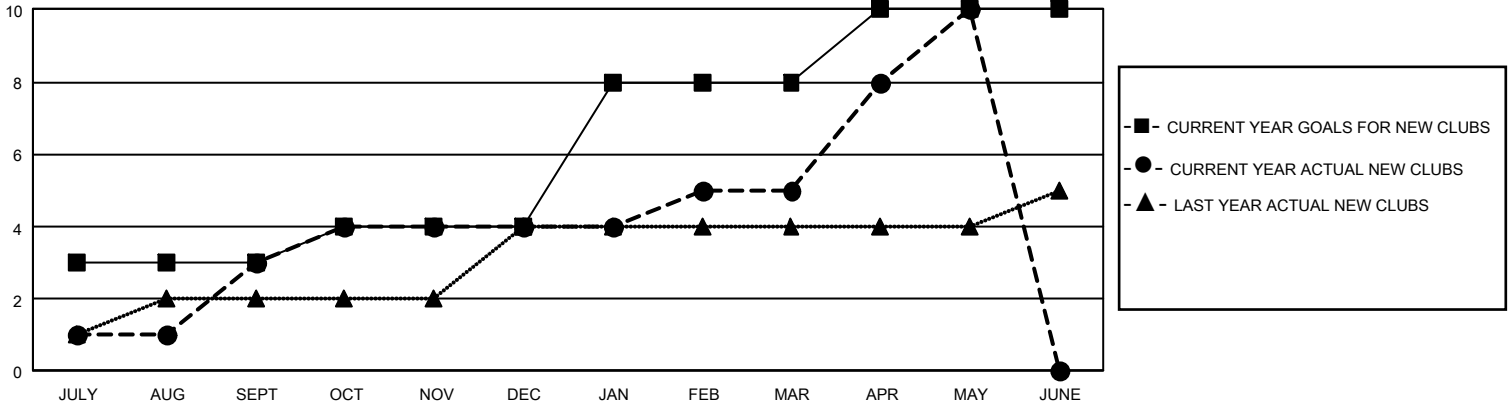
GMT Constitutional Area 3, Group J

REPORT DOES NOT INCLUDE CLUBS IN UNDISTRICTED AREAS.

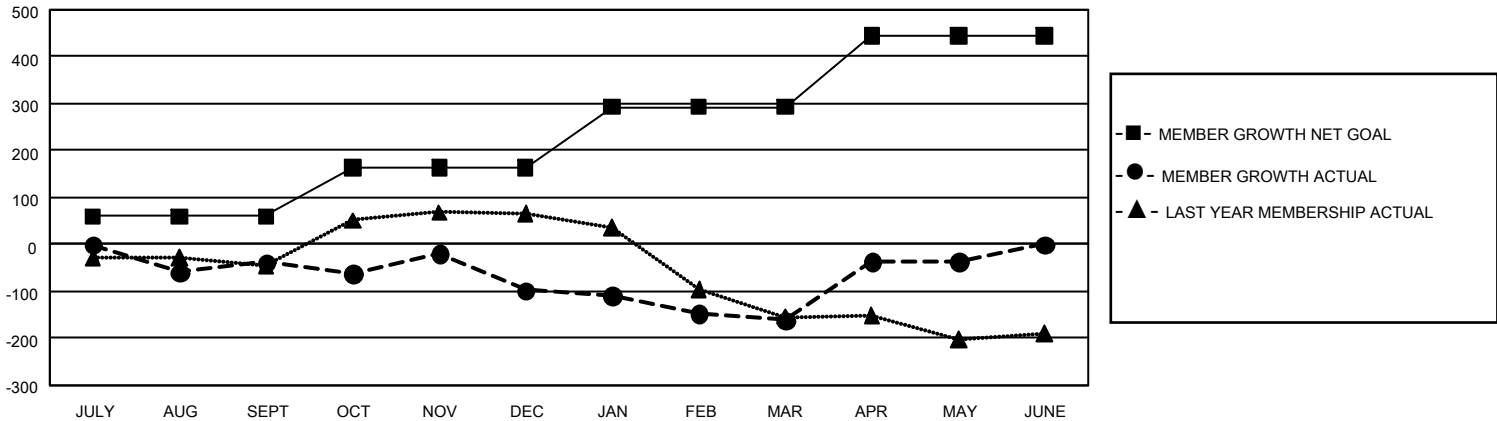
Clubs			
RESULTS FOR 2021-2022			
QUARTER	NEW CLUB GOAL	NEW CLUBS	DROPPED CLUBS
JULY/AUG/SEPT	9	3	5
OCT/NOV/DEC	3	1	3
JAN/FEB/MAR	12	1	2
APR/MAY/JUNE	6	5	0

Members			
RESULTS FOR 2021-2022			
QUARTER	MEMBER GROWTH NET GOAL	MEMBER GROWTH ACTUAL	DROPPED MEMBERS ACTUAL (including transfers)
JULY/AUG/SEPT	60	170	185
OCT/NOV/DEC	103	244	279
JAN/FEB/MAR	130	123	148
APR/MAY/JUNE	151	288	140

GOALS AND ACTUAL NEW CLUBS CUMULATIVE



GOALS AND ACTUAL MEMBERS CUMULATIVE



DROPPED CLUBS: 9	99 CLUBS OF 205 ADDED 1 OR MORE NEW MEMBERS	<u>GENDER DISTRIBUTION</u>	
		MALE 2,864 (55.19%) FEMALE 2,325 (44.81%) NON BINARY 0 (0.00%) PREFER NOT TO ANSWER 0 (0.00%)	
<u>DROPPED MEMBERS</u>		CLICK HERE FOR CUMULATIVE MEMBERSHIP DATA	TOTAL FAMILY UNIT MEMBERS 2,152
DECEASED 65 CLUB CANCELLED 110 OTHER 577 TOTAL 752			FAMILY MEMBERS PAYING HALF DUES 1,134